

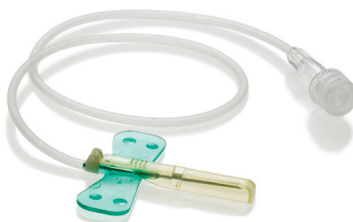
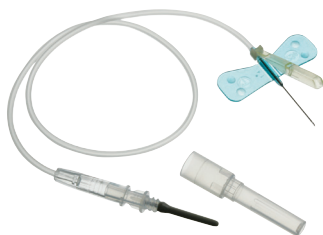
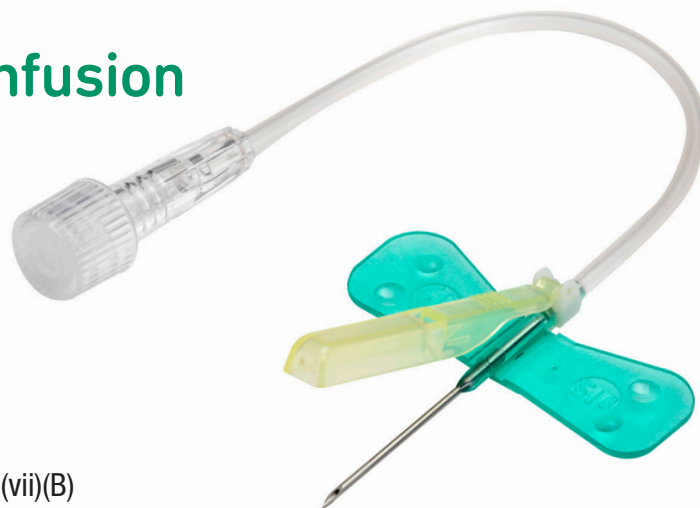
Surshield® Safety Winged Infusion and Blood Collection Sets

Terumo® Surshield® Safety Winged Needle Sets provide:

- One-handed*, easy-to-activate safety device
- Minimal steps for activation
- No change in needle insertion technique required
- Confirmation that needle is securely locked
- Minimize the risk of needlestick injuries

*Note: OSHA bloodborne pathogen standard 1910.1030(d)(2)(vii)(B)

Surshield® Safety Winged Needle Sets have the soft, flexible, interlocking wings that readily conform to body's contour. The needles are bonded to the wings at just under a 3° downward angle, for less risk of vessel damage or occlusion of the lumen. The coil-resistant tubing reduces recoil during use. Surshield® Safety Needle sets are DEHP free and have no components made of natural rubber latex.



Surshield® Safety Winged Blood Collection Sets

Packed: 50/box, 10 boxes/case (500)

| Product Code | Description |
|--------------|-------------------|
| (12" Tubing) | |
| MN*SVS21B30 | 21G x 3/4" needle |
| MN*SVS23B30 | 23G x 3/4" needle |
| MN*SVS25B30 | 25G x 3/4" needle |
| (7" Tubing) | |
| MN*SVS21B18 | 21G x 3/4" needle |
| MN*SVS23B18 | 23G x 3/4" needle |

Surshield® Safety Winged Infusion Sets

Packed: 50/box, 10 boxes/case (500)

| Product Code | Description |
|-----------------|-------------------|
| (3 1/2" Tubing) | |
| ■ SV*S19BLS | 19G x 3/4" Needle |
| ■ SV*S21BLS | 21G x 3/4" Needle |
| ■ SV*S23BLS | 23G x 3/4" Needle |
| ■ SV*S25BLS | 25G x 3/4" Needle |
| (12" Tubing) | |
| ■ SV*S19BL | 19G x 3/4" Needle |
| ■ SV*S21BL | 21G x 3/4" Needle |
| ■ SV*S23BL | 23G x 3/4" Needle |
| ■ SV*S25BL | 25G x 3/4" Needle |

Multi-Sample Luer Adapter

Sterile and disposable, adapters fit into standard infusion sets transforming them into winged blood collection sets. This allows multiple draws into evacuated tubes. Accepts standard tube holders.
Packed: 100/box, 30 boxes/case (3,000)

| Product Code | Description |
|--------------|---|
| XX*MN2000TE | VENOJECT® Multi-Sample Luer Adapter (male). |



Call your Terumo representative at:
1.800.888.3786
or visit www.TerumoTMP.com
and click on Find Your Local Terumo Rep.

Help shield your staff
against accidental needlesticks
with Surshield®

Surshield® Safety Winged Infusion and Blood Collection Sets

Based on IFU Rev. October 2008.

INSTRUCTIONS FOR USE

Aseptic technique, proper skin preparation and continued protection of the site are essential. Observe Universal Precautions on ALL patients.

PRECAUTION: Keep hands behind the needle at all times during use and disposal.

NOTE: Use only one set for I.V. Administration or Blood Collection. Same set should not be used for both procedures.

1. Open the package.

For I.V. administration: Remove luer adapter from the hub of the blood collection set. Connect an administration set, syringe, etc. to hub and secure.

Proceed to step 5.

NOTE PRIMING VOLUME= 0.41ml

For Blood Collection:

2. Prior to removing the luer adapter protector, tighten the connection of luer adapter to the hub of the blood collection set.

3. Remove protector from luer adapter.

4. Thread into holder. (Fig. 1)

5. Flip the safety shield back away from the needle towards the tubing. Grasp wings.

6. Remove the needle protector. **Caution:** Care should be taken not to touch the needle.

7. Perform venipuncture and confirm proper positioning in the vessel, and proceed with blood collection or I.V. administration per facility protocol.

Note: The draw volume in the initial evacuated blood collection tube will be reduced by approximately 0.5 ml due to the deadspace in the collection set tubing.

AFTER USE

8. Remove tape, if present, from wings.

9. Flip the safety shield forward toward needle. Grasp the wing with your thumb on top of the shield and your index finger under the wing. Completely remove the needle from the puncture site and apply digital pressure to the site using a sterile gauze pad. (Fig. 2)

10. While maintaining the same grip on the device (per step 9 above), activate the safety feature by performing either of the following methods:

Slide your thumb forward over the shield while pinching your finger and thumb together (Fig. 3) (or press the safety shield against a hard surface such as a bedside table) until an audible click is heard and the safety feature is visually confirmed to be activated. (Fig. 4)

Recommended (one-handed) method:

(Reference OSHA 1910.1030 (d)(2)(vii)(B))

OR

Alternate (two-handed) method:

While keeping both hands behind the needle, grasp one of the wing tabs with your free hand to stabilize the device. (Fig. 5) (If necessary, reposition your original grip per step 9 being careful not to press against an exposed area of the needle.) Then, slide your thumb forward over shield while pinching your finger and thumb together (Fig. 3) until an audible click is heard and the safety feature is visually confirmed to be activated. (Fig. 6)

Caution: Needle must be carefully and firmly placed into the lock position of the safety shield.

11. Do not attempt to deactivate the safety device by separating the needle from the safety shield.

12. Dispose of used needles and materials following the policies and procedures of your facility, as well as federal and local regulations for "Sharps Disposal."

These products have no components made of natural rubber latex.

RX ONLY. The advertisement is directed to physicians only, and not to consumers. Refer to product labels and packaging insert for complete warnings, precautions, potential complications, and instructions for use. Products may not have regulatory approval in all countries. Please contact your local sales representative if you have questions about the availability of products in your area.

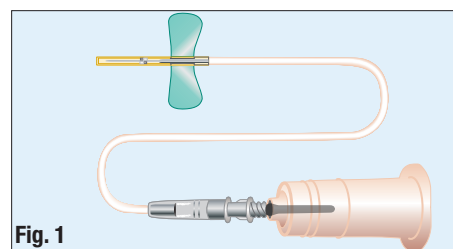


Fig. 1
Thread into holder

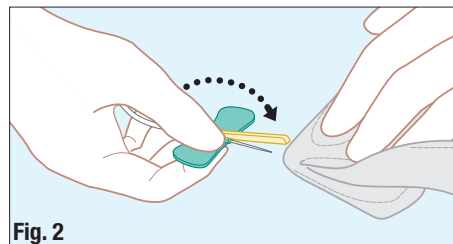


Fig. 2
Remove needle from puncture site, apply gauze

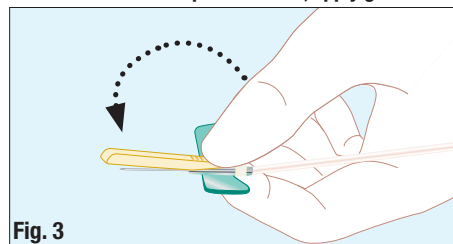


Fig. 3
Pinch activation method - audible click

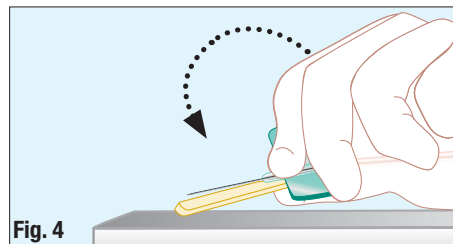


Fig. 4
Hard surface activation method - audible click

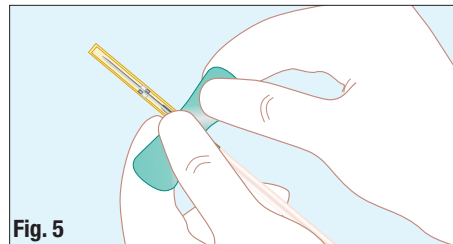


Fig. 5
Grasp one wing to stabilize

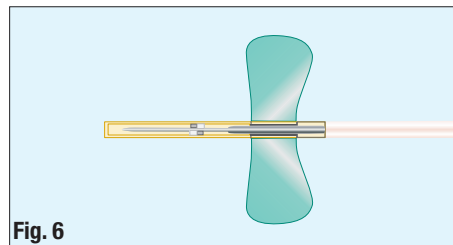


Fig. 6
Visually confirm activation

TERUMO, TERUMO and SURSHIELD are trademarks owned by Terumo Corporation, Tokyo, Japan, and they are registered with the U.S. Patent & Trademark Office. 10/22 PM-06366

