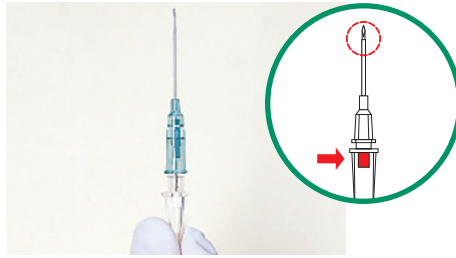


Surshield-PUR Safety I.V. Catheters

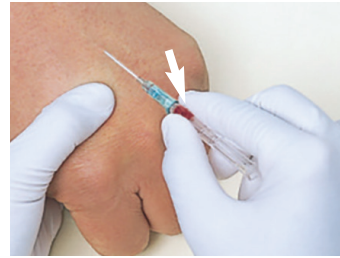
Please refer to the full Instructions for Use for complete instructions on how to use this medical device.



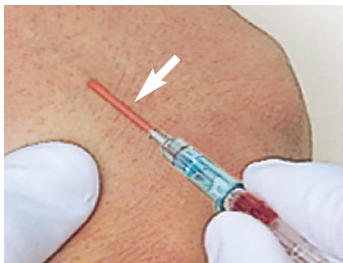
Disinfect the skin at the puncture site and remove the catheter from the package.



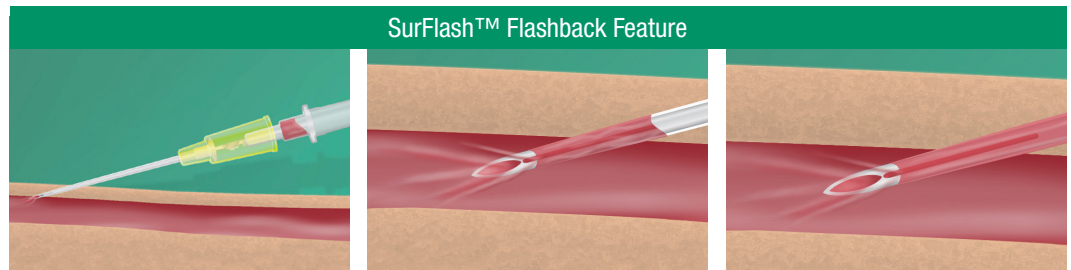
Ensure that the clear rectangle etched on the needle hub is facing up. This indicates correct alignment of the needle bevel.



Perform a venipuncture at the disinfected site and observe blood flashback in the needle hub.



Advance the catheter. Flashback in the catheter will provide visual confirmation that the catheter is in the vein.



The needle has been advanced in the vein as confirmed through normal flashback in the hub.

SurFlash (flashback in the catheter) confirms proper placement.

The SurFlash feature confirms proper catheter placement with flash visible along the entire length of the catheter.

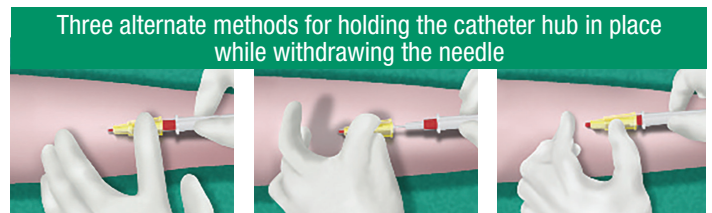


Back of hand



Inside forearm

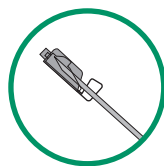
Before removing the inner needle, compress the vein at the tip of the catheter to prevent blood spillage. Holding the colored catheter hub firmly, withdraw the inner needle straight back in one steady motion.



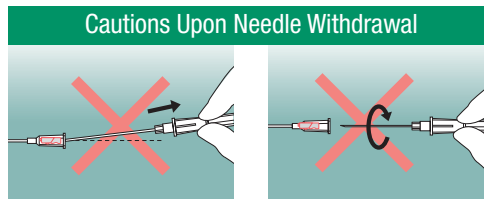
Apply pressure over vein distal to catheter tip to stop blood flow with middle finger; use index finger to hold catheter hub in place.

Apply pressure over vein distal to catheter tip to stop blood flow with middle or fourth finger; use index finger and thumb to hold catheter hub in place.

Apply pressure over vein distal to catheter tip to stop blood flow with index finger; use thumb to hold catheter hub in place.

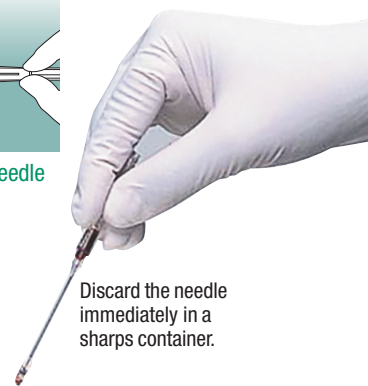


The safety cover will automatically protect the tip of the inner needle.



Do not withdraw the needle at an extreme angle.

Do not rotate the needle during withdrawal.



Discard the needle immediately in a sharps container.

Guidelines for Optimal Results