

SurTract™ Safety Syringes and Needles

SurTract™ is Terumo's new retractable safety hypodermic line that reduces the risk of needlestick injury through a passive safety system while minimizing patient discomfort during injection*.

- Smooth and comfortable injection due to less plunger pressure*
- Blunt needle allows change of needle for drawing up and prevents needle dullness
- Lessens medical waste due to lack of external plastic safety sheath
- Low dead space syringe* reduces medication waste
- Customizable Needle Selection - SurTract™ safety needles are designed for use exclusively with SurTract™ safety syringes allowing you to create the combination you need

SurTract™ Safety Syringes

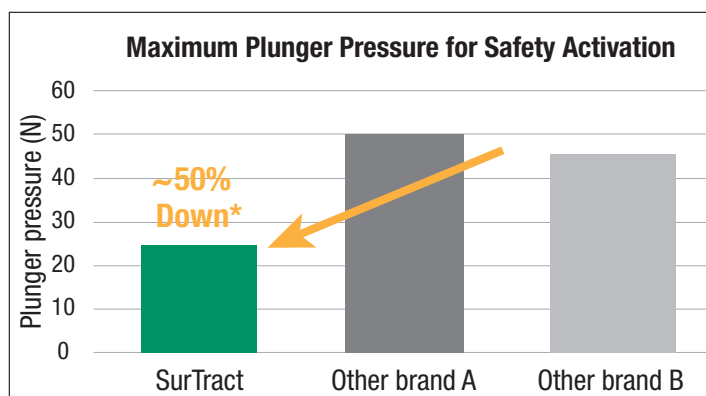
Packaging: 100/case

Product Code	Description
STR-01SS	1cc syringe Graduations: 0.1cc (2cc total)
STR-03SS	3cc syringe Graduations: 0.1cc (3cc total)
STR-05SS	5cc syringe Graduations: 0.1cc (5cc total)

SurTract™ Safety Needles

Packaging: 100/box, 10 boxes/case (1,000)

Product Code	Description
STR-2025NN	20G x 1" needle
STR-2038NN	20G x 1 ½" needle
STR-2125NN	21G x 1" needle
STR-2138NN	21G x 1 ½" needle
STR-2225NN	22G x 1" needle
STR-2238NN	22G x 1 ½" needle
STR-2325NN	23G x 1" needle
STR-2338NN	23G x 1 ½" needle
STR-2516NN	25G x 5⁄8" needle
STR-2525NN	25G x 1" needle
STR-2713NN	27G x ½" needle
STR-1832BN	18G x 1 ¼ needle - Blunt



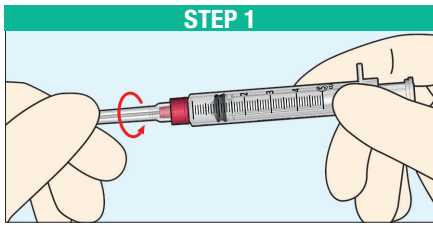
Call your Terumo representative at:
1.800.888.3786 or visit www.TerumoTMP.com

*Data on file

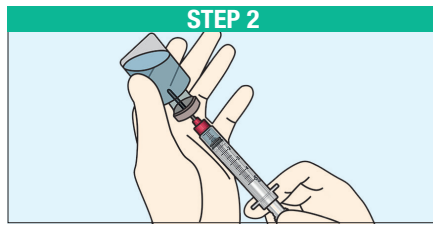
These products have no components made of natural rubber latex. **RX ONLY.** The advertisement is directed to physicians only, and not to consumers. Refer to product labels and packaging insert for complete warnings, precautions, potential complications, and instructions for use.

SurTract™ Safety Syringes and Needles: Instructions For Use

Terumo SurTract™ is an automatically retractable safety syringe, it is intended to provide a safe, accurate and reliable method for the aspiration of fluids and for the injection of fluids immediately after filling. It is intended to be used for the administration of medications (intramuscular (IM), intradermal (ID), and subcutaneous (SC)). The syringe, once assembled with its needle, incorporates a passive safety mechanism which retracts and contains the contaminated needle after use, aiding in the prevention of possible infections due to needle stick injuries and syringe re-use. Needle retraction is activated by the syringe user with one hand.

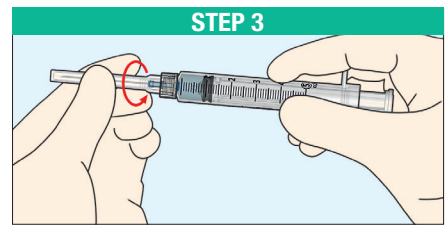


STEP 1. Peel off the packages to access both the desired Terumo SurTract™ Safety Syringe and the Terumo SurTract™ Safety Needle (Blunt Fill Needle). Attach the Terumo SurTract™ Safety Needle (Blunt Fill Needle) to the Terumo SurTract™ Safety Syringe with a **tight** clockwise twist.



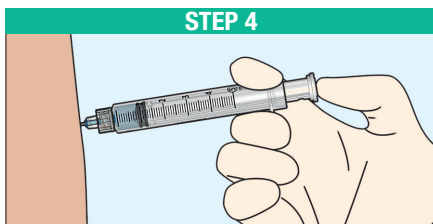
STEP 2. Perform medication preparation and drug aspiration.

Then, once the syringe is filled with the desired quantity of medicine, remove the Terumo SurTract™ Safety Needle (Blunt Fill Needle) and dispose of it in a sharps container, following local protocols and all applicable federal and local regulations for sharps disposal.

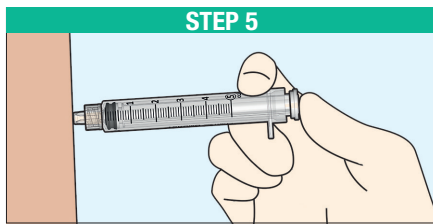


STEP 3. Peel off the package of the desired Terumo SurTract™ Safety Needle. Attach the Terumo SurTract™ Safety Needle for injection to the Terumo SurTract™ Safety Syringe with a **tight** clockwise twist.

Pull the needle cap off the needle and expel air bubbles.

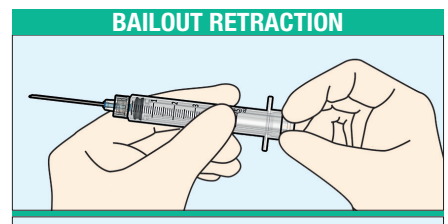


STEP 4. Inject medication, according to established medical protocol. Make sure all the medication is injected.



STEP 5. Continue pressing the plunger button until the retrieval mechanism is activated. The needle will be automatically retracted inside the barrel, and a haptic feeling will be perceived as well as a “click” sound. Do not remove the needle connector after use.

After use, dispose of the device according to the operating procedures of healthcare facilities specific for potentially infectious waste management, as well as Federal and local regulations for sharps disposal.



In case of the retrieval mechanism failure, the user may unlock the mechanism by slightly pulling back the plunger. Otherwise, dispose of the syringe in the sharps container without re-capping the needle. Do not remove the needle connector after use.

PRECAUTIONS

- End users should be familiar with instructions for use and be trained in the administration of medication and injections.
- Do not use if single unit package is damaged or needle cap is detached.
- Do not store at extreme temperatures and humidity. Avoid direct sunlight.
- The syringes and needles are sterile (EtO sterilization) until removed from their protective packaging. They are single-use only.
- The needle retrieval mechanism can only be activated when the medication or fluid is fully injected.
- Do not push the syringe further inside the body while activating the retracting mechanism.
- Discard the syringe immediately after use without any further utilization.

WARNINGS

- Terumo SurTract™ Safety Needle is designed for use with Terumo SurTract™ Safety Syringe only.
- Syringe re-use could lead to infection or transmission of diseases: do not try to re-use the device.
- The device shall not be used on a patient having a body weight lower than 6.6 lbs.
- Do not use this product to draw blood or for endovenous punctures.
- Terumo SurTract™ is a single-use device. Do not re-sterilize.
- Terumo SurTract™ Safety Needle (Blunt Fill Needle) is designed only for drug preparation, and it is not intended to come in contact with the human body. **DO NOT USE IT FOR MEDICATION INJECTION.**
- Report any device malfunction, performance deterioration, inadequate instructions, or inadequate labeling to the manufacturer and competent authority. Failure to report such issues may result in serious injury, death, or significant deterioration in a person's health.

RX ONLY. The advertisement is directed to physicians only, and not to consumers. Refer to product labels and packaging insert for complete warnings, precautions, potential complications, and instructions for use. Products may not have regulatory approval in all countries. Please contact your local sales representative if you have questions about the availability of products in your area.



TERUMO MEDICAL CORPORATION 265 Davidson Avenue Somerset NJ 08873 U.S.A.

TERUMO, TERUMO and SURTRACT are trademarks owned by Terumo Corporation, Tokyo, Japan, and they are registered with the U.S. Patent & Trademark Office. © 2025 Terumo Medical Corporation. All rights reserved. All brand names are trademarks or registered trademarks of their respective owners. PM-10044